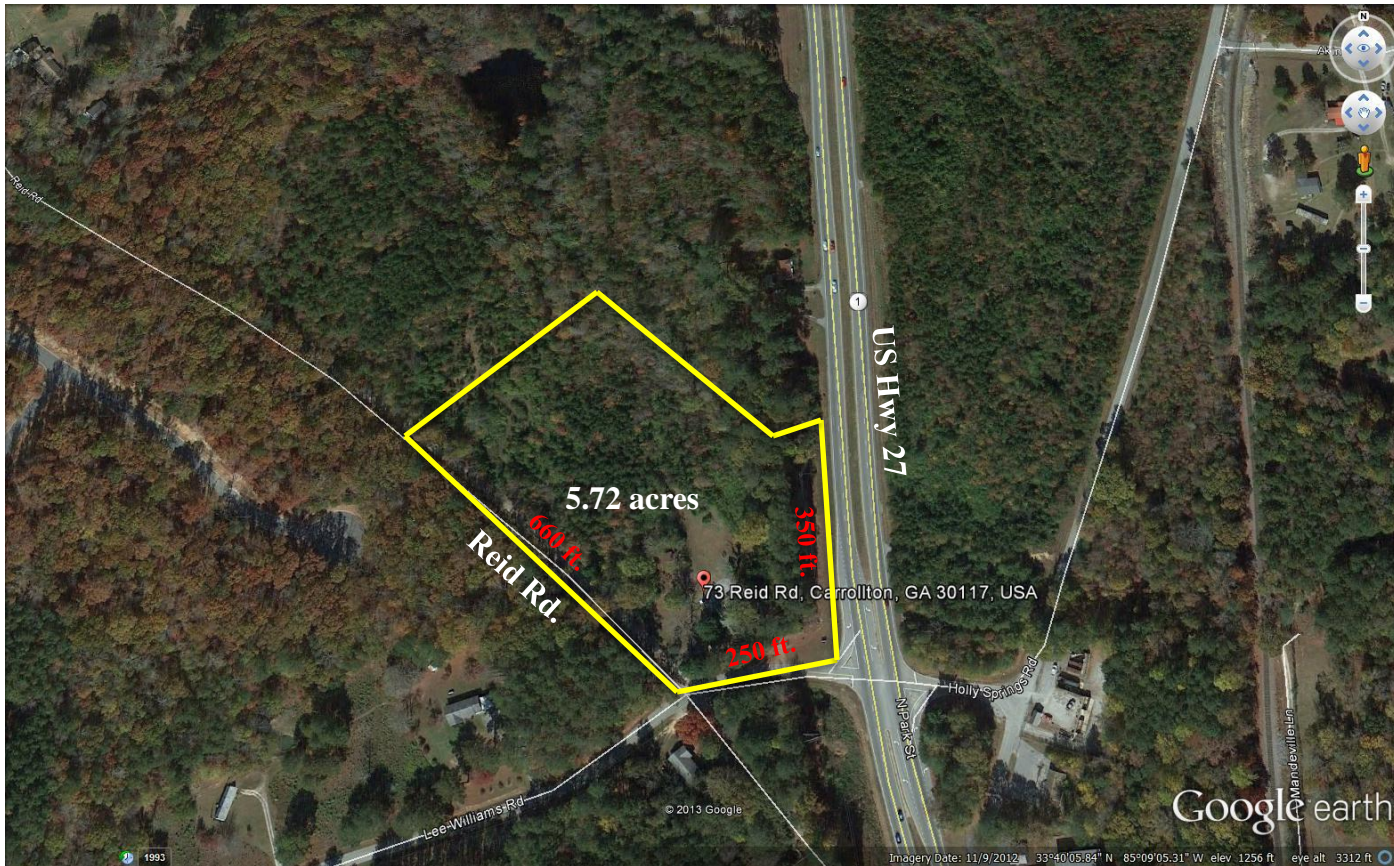


# Large Commercial Tract for Sale US Hwy 27



- **5.72 acres with commercial zoning in place**
- **Pin corner of US 27 and Lee Williams Rd.**
- **All GDOT work done on US 27**
- **Triple road frontage with driveways in place**
- **1 mile south of I-20, exit 11 (Bremen, Ga.)**
- **25,000 vpd traffic count**
- **Public water, gas and fiber optic (sewer at some expense)**
- **Level lot with minimal grading required**
- **Natural slope for stormwater and detention**
- **\$575,000 for all or will divide**

*Offered exclusively by*  
**Commercial Realty Services of West Georgia**  
**Mike Patterson, CCIM**  
770-301-1886 [ebroker@msn.com](mailto:ebroker@msn.com)  
[www.westgeorgiacommercial.com](http://www.westgeorgiacommercial.com)

